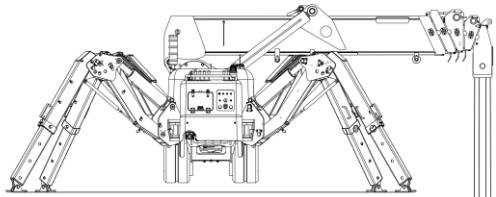
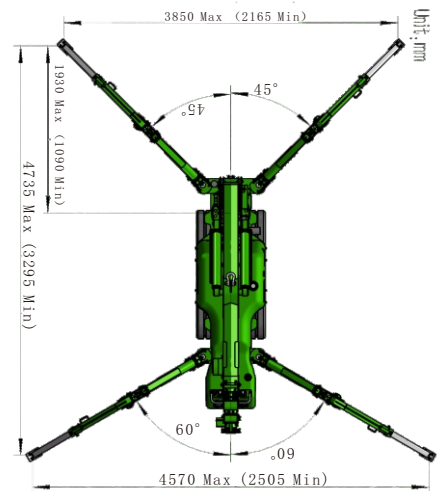
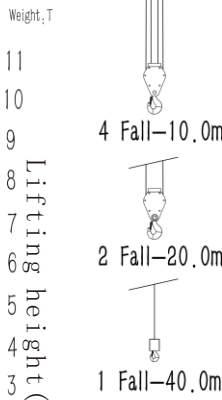
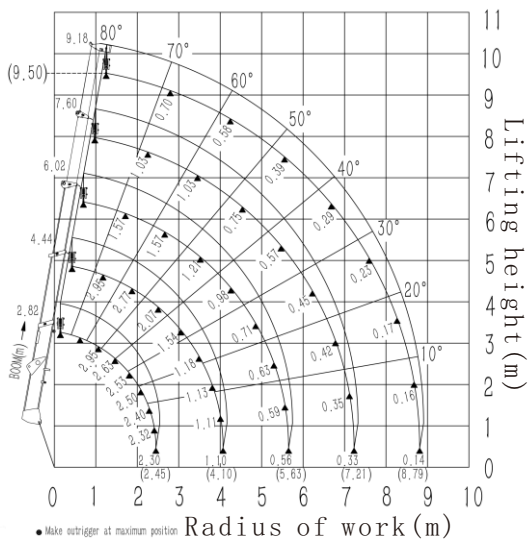


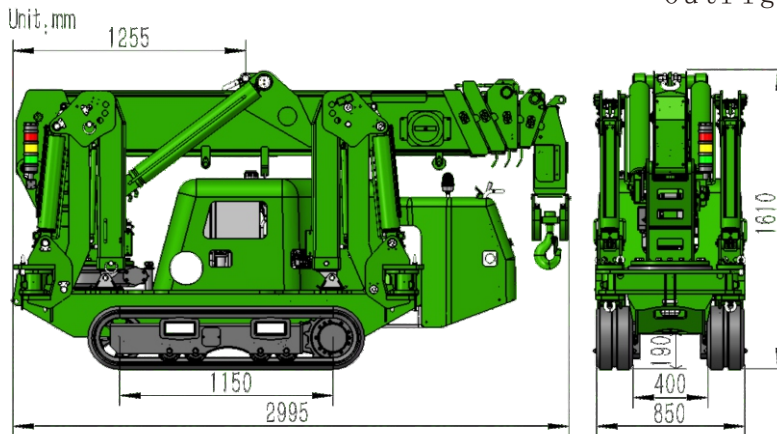
LT3.0 Mini Crawler Crane spider crane



Working Range Diagram



Outrigger Footprints



Dimensions

Website: www.levoltspidercrane.com

Tel: 0086 (371) 57157086

Email: info@levoltcrane.com

Model		LT3.0
Capacity		2.95t×1.3m
Working radius		8.79m×0.14t
Ground lifting height		9.5mX0.7t
Underground lifting height		10mX1t(4 fall) 20mX1t(2 fall) 40mX0.74t(1 fall)
Winch device	Hook speed	0-8m/min (4 fall)
	Rope type	Φ8mm×50m (Minimum breaking force 60.6KN 2160N/mm ²)
Telescopic system	Boom form	5 section boom, hexagonal box construction
	Boom length/Time	2.82m-9.18m/20sec
Up and downs	Boom angle/Time	0-70°/13sec
Slew system	Slew angle/Speed	0-360° (continuous) /60sec
Outrigger	Outrigger active form	Manual+Hydraulic
	Maximum extended dimensions (mm)	4735 (Length) X3850 (Front) X4570 (Back)
Traction system	Walking way	Hydraulic motor drive、 2 speed
	Walking speed	0-2.5km/h
	Grade ability	20°(36%)
	Ground length×width	1150mm×230 mm
	Ground pressure	42kpa (0.43 kgf/cm ²)
Electric motor	Voltage	AC380V (Optional)
	Power/Speed	4kw/1440 min-1
	Sound level	Rated speed ≤60dB(A) (1m)
Diesel engine	Model	2TNV70 (YANMAR)
	Type/Displacement	2 cylinder water cooled/0.57L
	Rated output	7.5kw/2400 min-1
	Starting method	Electric
	Operating temperature	-5°C~40°C
	Fuel/Volume	Diesel/12L
	Battery capacity	12v 45AH
	Specific fuel consumption	284g/kW-h
	Sound Level	Rated speed ≤80.5dB(A) (1m)
	Applied regulation	EPA-Tier2 , China phase 3
Operate system	Type of operation (crane, walk, leg、 accelerator)	Wireless remote control and manual operation
	Operating characteristic	Full proportional control and linkage control
Dimension	Length×Width×Height	2995mm×800mm×1610mm
Weight	(Without optional equipment)	2250kg
Standard equipment	Diesel engine and motor (Dual power)、 Manual and wireless proportional remote (Dual operation mode) 、 Intelligent display screen、 Moment limiter、 Over hoist alarm and automatic stop device、 Three-winding alarm and automatic stop device、 Automatic hook stow、 Outrigger position detector device、 Outrigger off ground (or crane body 3-degree inclination)alarm and automatic stop device、 Slings rope detachment protector、 EMO switch、 Three color lamp、 Remote control lamp、 Voice prompt、 Walking/Outrigger/Boom three-mode interlock system、 Data records	
Optional equipment	Searcher hook (0.6t) 、 Fly jib(0.7t)、 Single fall hook、 Outrigger Pads、 Man basket	